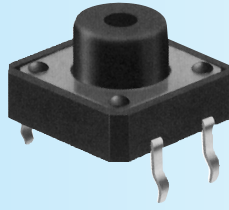
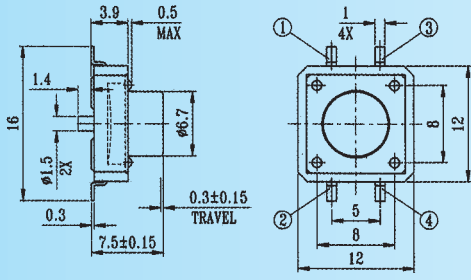


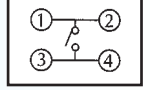
TD-12EA (with embossing) TD-12XA (without embossing) series



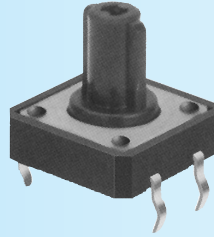
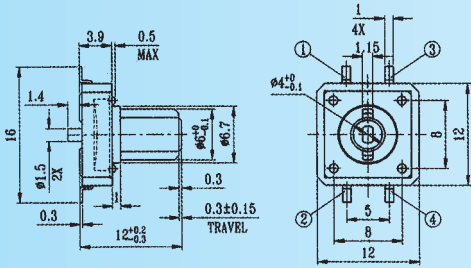
COVER TYPE	CODE	CODE	Operating Force, gf
PLASTIC	A01	X	160
METAL	A00	Z	250

1. RATING: DC 12V 50mA
2. TRAVEL: 0.3 ± 0.15 mm
3. CONTACT RESISTANCE 100mΩ MAX
4. LIFE: 100,000 cycles min
5. OPERATING FORCE 160±50 gf

CIRCUIT DIAGRAM



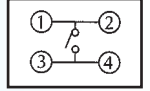
TD-12EB (with embossing) TD-12XB (without embossing) series



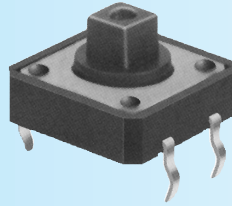
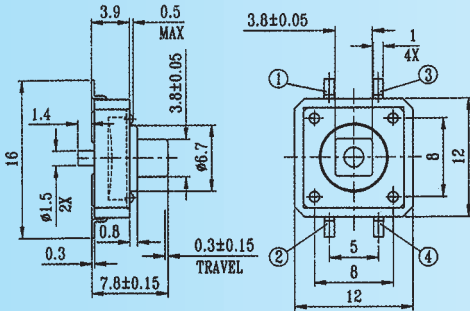
COVER TYPE	CODE	CODE	Operating Force, gf
PLASTIC	A01	X	160
METAL	A00	Z	250

1. RATING: DC 12V 50mA
2. TRAVEL: 0.3 ± 0.15 mm
3. CONTACT RESISTANCE 100mΩ MAX
4. LIFE: 100,000 cycles min
5. OPERATING FORCE 160±50 gf

CIRCUIT DIAGRAM



TD-12EC series TD-12XC series

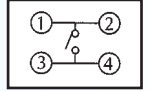


MODEL	GUIDE PIN	TAPE & REEL OPTION
TD-12EC	With	No
TD-12XC	Without	No

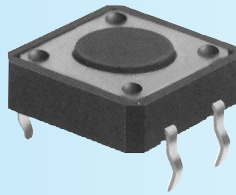
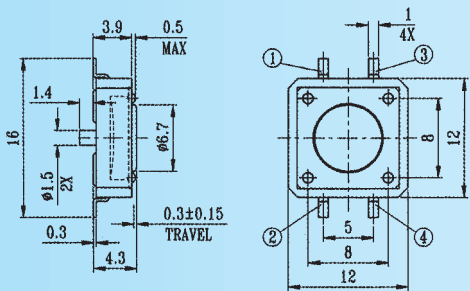
COVER TYPE	CODE	CODE	Operating Force, gf
PLASTIC	A01	X	160±50
METAL	A00	Z	250±100

1. RATING: DC 12V 50mA
2. TRAVEL: 0.3 ± 0.15 mm
3. CONTACT RESISTANCE 100mΩ MAX
4. OPERATING FORCE 160±50 gf

CIRCUIT DIAGRAM



TD-12ED series TD-12XD series

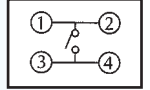


MODEL	GUIDE PIN	TAPE & REEL OPTION
TD-12ED	With	No
TD-12XD	Without	No

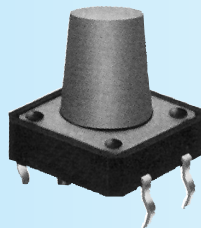
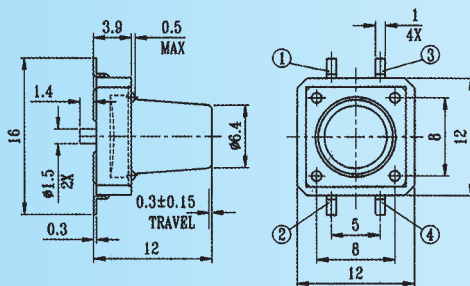
COVER TYPE	CODE	CODE	Operating Force, gf
PLASTIC	A01	X	160±50
METAL	A00	Z	250±100

1. RATING: DC 12V 50mA
2. TRAVEL: 0.3 ± 0.15 mm
3. CONTACT RESISTANCE 100mΩ MAX
4. OPERATING FORCE 160±50 gf

CIRCUIT DIAGRAM



TD-12EF series TD-12XF series



MODEL	GUIDE PIN	TAPE & REEL OPTION
TD-12EF	With	No
TD-12XF	Without	No

COVER TYPE	CODE	CODE	Operating Force, gf
PLASTIC	A01	X	160±50
METAL	A00	Z	250±100

1. RATING: DC 12V 50mA
2. TRAVEL: 0.3 ± 0.15 mm
3. CONTACT RESISTANCE 100mΩ MAX
4. LIFE: ≥100,000 cycles
5. OPERATING FORCE 160±50 gf

CIRCUIT DIAGRAM

